



Country Squire Mobile Home

4350 CHEROKEE RD #40, STOCKTON, CA 95215

Looking for a semi rural, affordable home and close to the freeway? This 55 plus community mobile home park may be the fit for you. Washer, Dryer and refrigerator stay with the home. Interested parties must complete and application and be approved by park management.



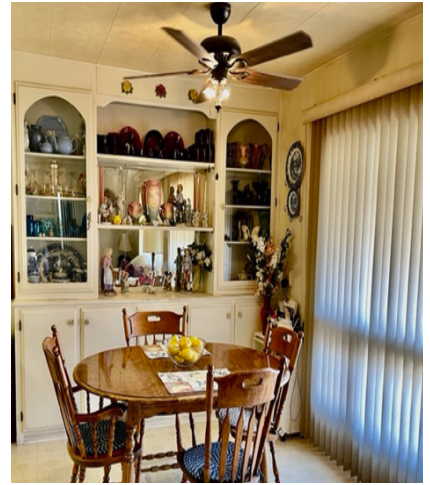
\$64,900 | 3BD | 2BA

Linda Sue Stewart

lsstewart@cortco.com | 209.351.0515 | DRE: 01486161
cortco.com/residential

STOCKTON BROKERAGE | 343 East Main Street | Stockton, CA 95202 | 209.235.5222 | <http://cortco.com/residential>

All information contained herein is deemed reliable, but has not been verified in any way by Brokers. Brokers make no representation or warranty, express or implied, about the accuracy or completeness of any information provided. Buyer shall perform its own due diligence and verify all information before purchasing.



FEATURES

- Double-wide mobile home
- 3 beds 2 bath
- 1200 sq. Ft.
- Covered parking
- Carpet and vinyl flooring
- Central cooling and heating
- Washer, dryer, + refrigerator incl.
- 55+ community



\$64,900 | 3BD | 2BA

Linda Sue Stewart

lsstewart@cortco.com | 209.351.0515 | DRE: 01486161
 cortco.com/residential