



Eastland Plaza

Office/Retail Spaces for Lease



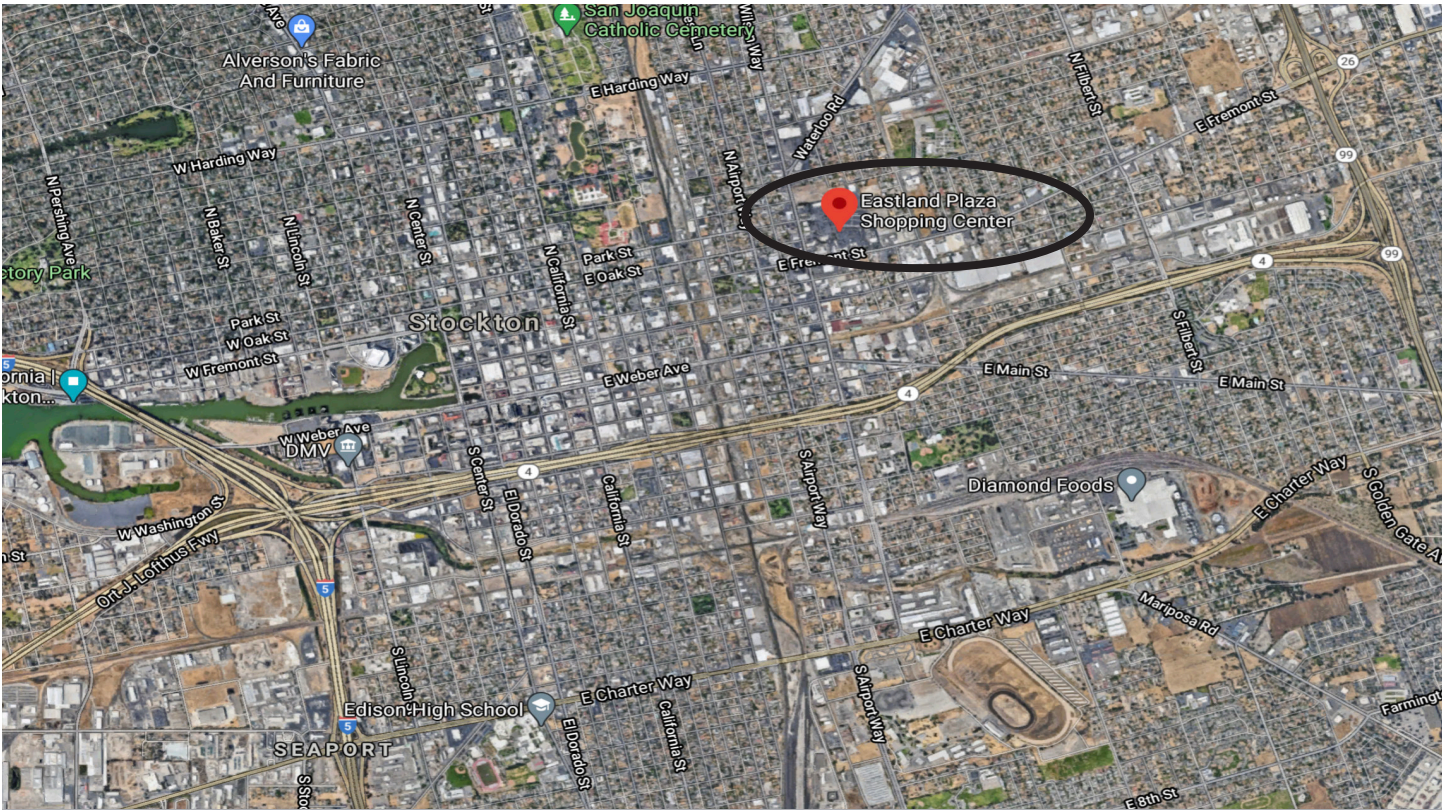
Mahala Burns
BRE# 01082668 | (209) 235-5231
mburns@cortco.com
343 East Main Street 10th Floor, Stockton, CA 95202

All information contained herein is deemed reliable, but has not been verified in any way by Brokers. Brokers make no representation or warranty, express or implied, about the accuracy or completeness of any information provided. Buyer shall perform its own due diligence and verify all information before purchasing.



Eastland Plaza

Office/Retail Spaces for Lease



Fresh & Expansive Office/Retail Spaces for Lease

Beautiful units available in the popular Eastland Plaza Shopping Center. Unit 10 +/- 7,868 SF unit is deal for a Retail or Urgent Care center, Dialysis center, Medical/Dental, or Auto Parts. Unit 16-17 +/- 3,790SF is perfectly demised, move-in ready office space with two separate entrances. This high-traffic retail center has a great mix of retail and grocery stores, restaurants, banks, and businesses. Convenient on-site parking.

- High visibility location with easy access to I-5 & 99
- ADA-accessible restrooms
- High ceilings, clean interiors
- Plug & Play Floor Plans
- Fully-sprinklered
- Under-market rental rates of \$1.25-\$1.50/sf MG
- On-site parking
- Busy retail center with dozens of retail stores, restaurants, Food 4 Less, fast food eateries, Mountain Mike's Pizza, & commercial businesses



Mahala Burns
BRE# 01082668 | (209) 235-5231
mburns@cortco.com
343 East Main Street 10th Floor, Stockton, CA 95202

All information contained herein is deemed reliable, but has not been verified in any way by Brokers. Brokers make no representation or warranty, express or implied, about the accuracy or completeness of any information provided. Buyer shall perform its own due diligence and verify all information before purchasing.